

Imperatives and Challenges for Local Data Ecosystems: Learning from Odisha

Neha Agarwal

Senior Research Associate, CPR

nagarwal@cprindia.org



South Asia Dialogue Series on SDG 6 Universal Access to Water and Sanitation by 2030

WEBINAR 2

THURSDAY
27 JANUARY 2022

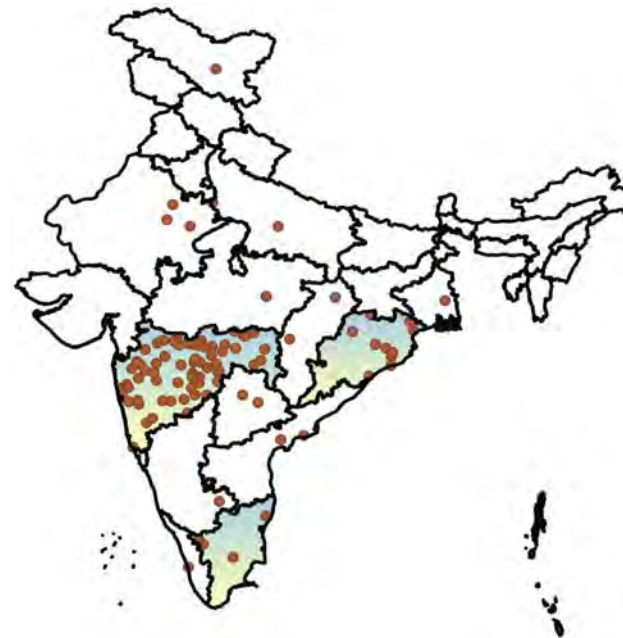
Fostering robust local data ecosystems for sustainable sanitation service delivery in cities of South Asia



2016 Formal FSM served nearly 0% of 1.3bn

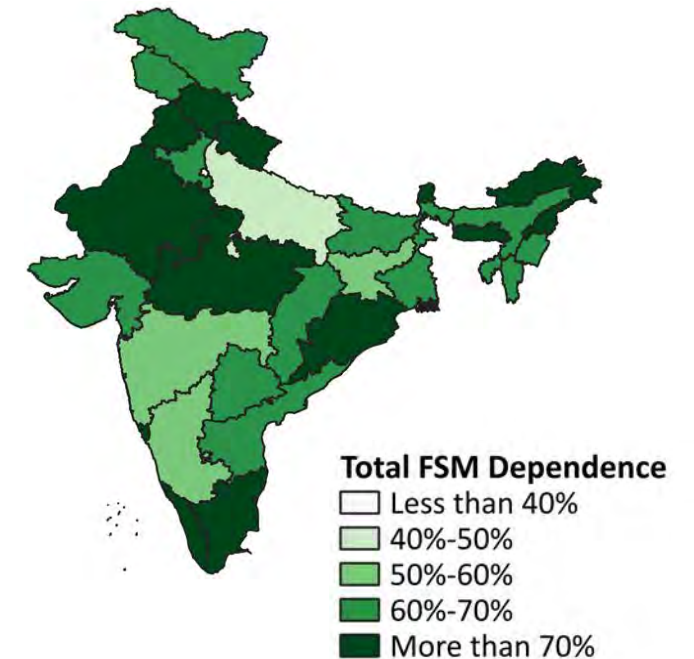


2020 Formal FSM serving about 1% of total population or ~14mn

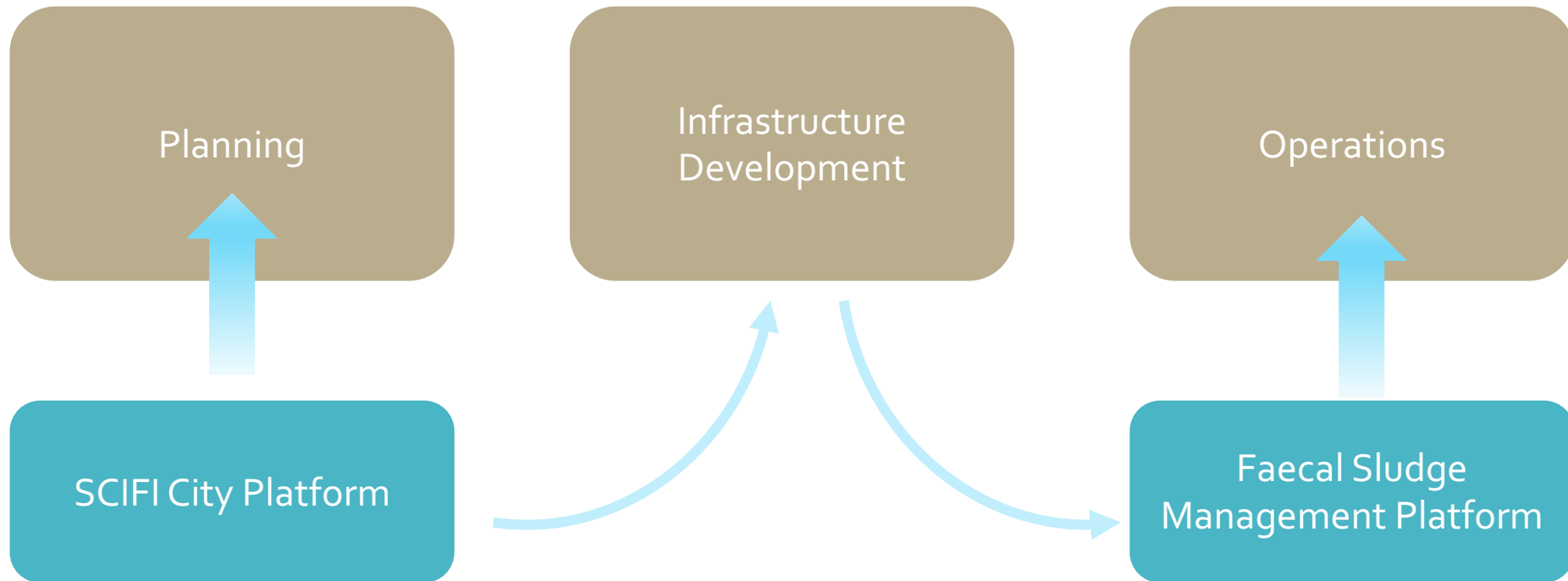


¹as per information available on July 16, 2020 from national PMU

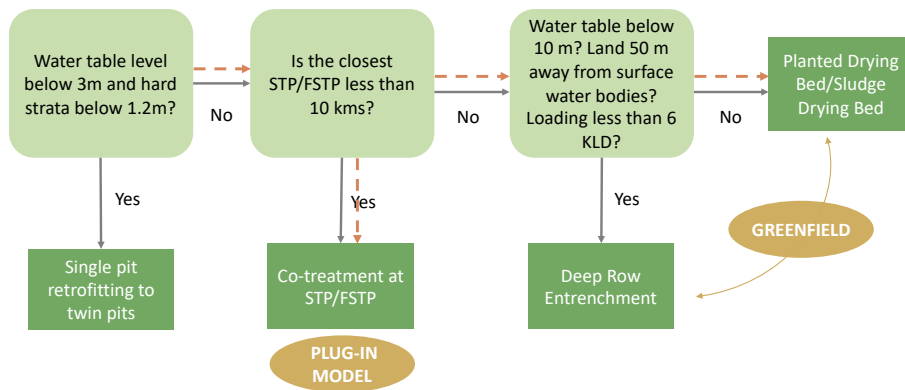
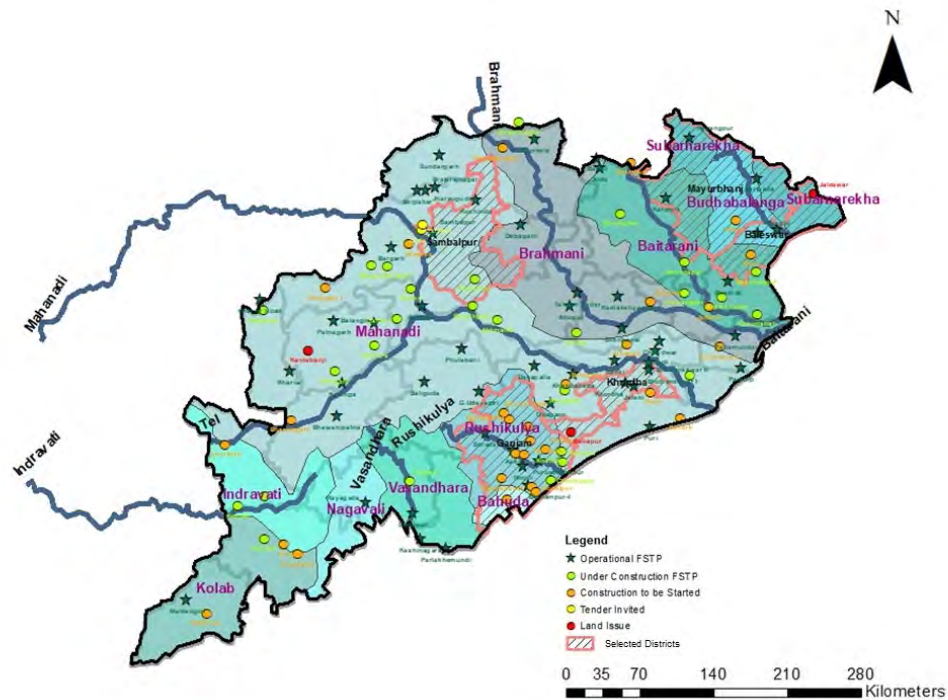
2030 FSM estimated to serve sanitation needs of 64% of total national population or ~960mn



Access to Safely Managed Sanitation



Planning

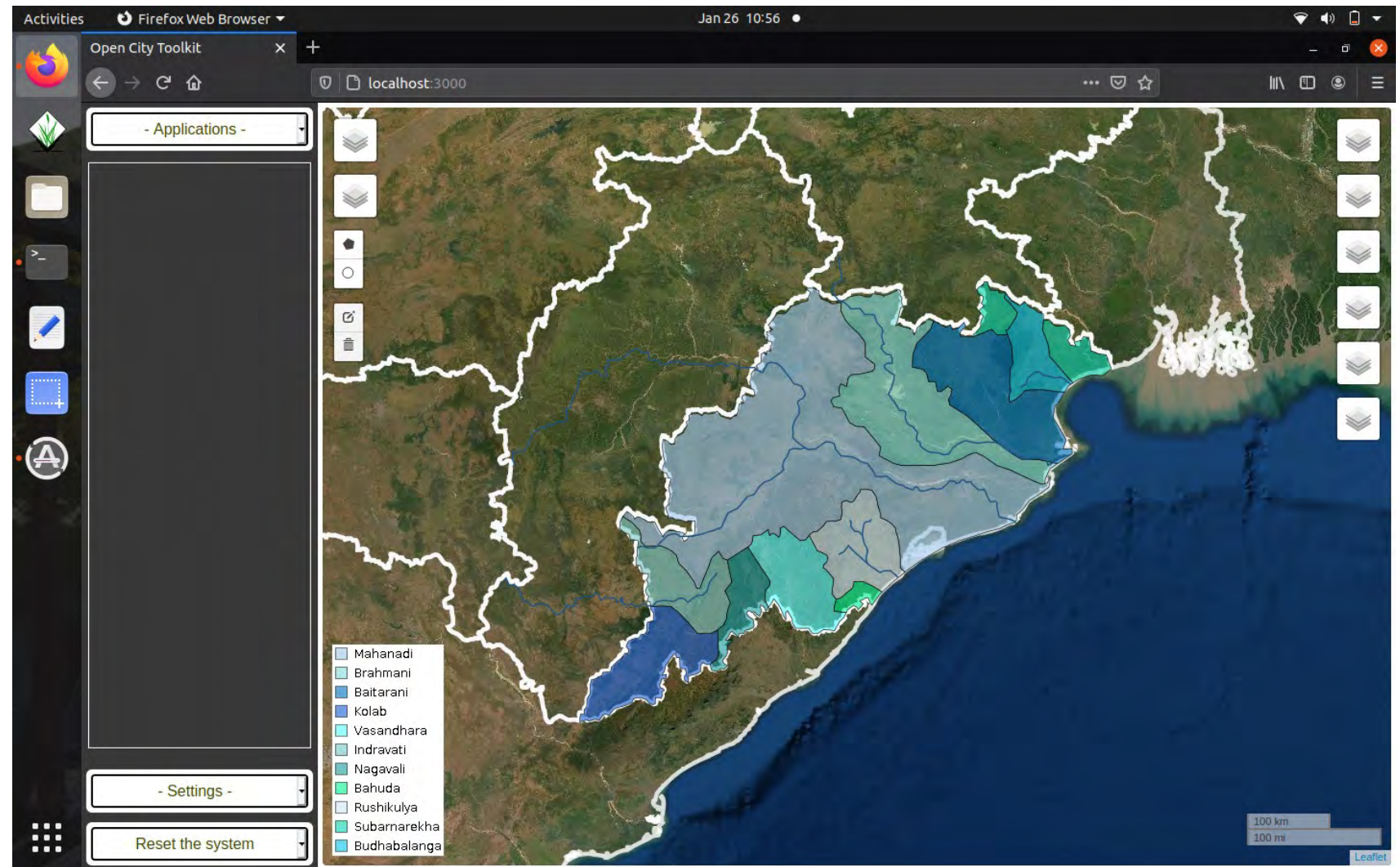


Operations

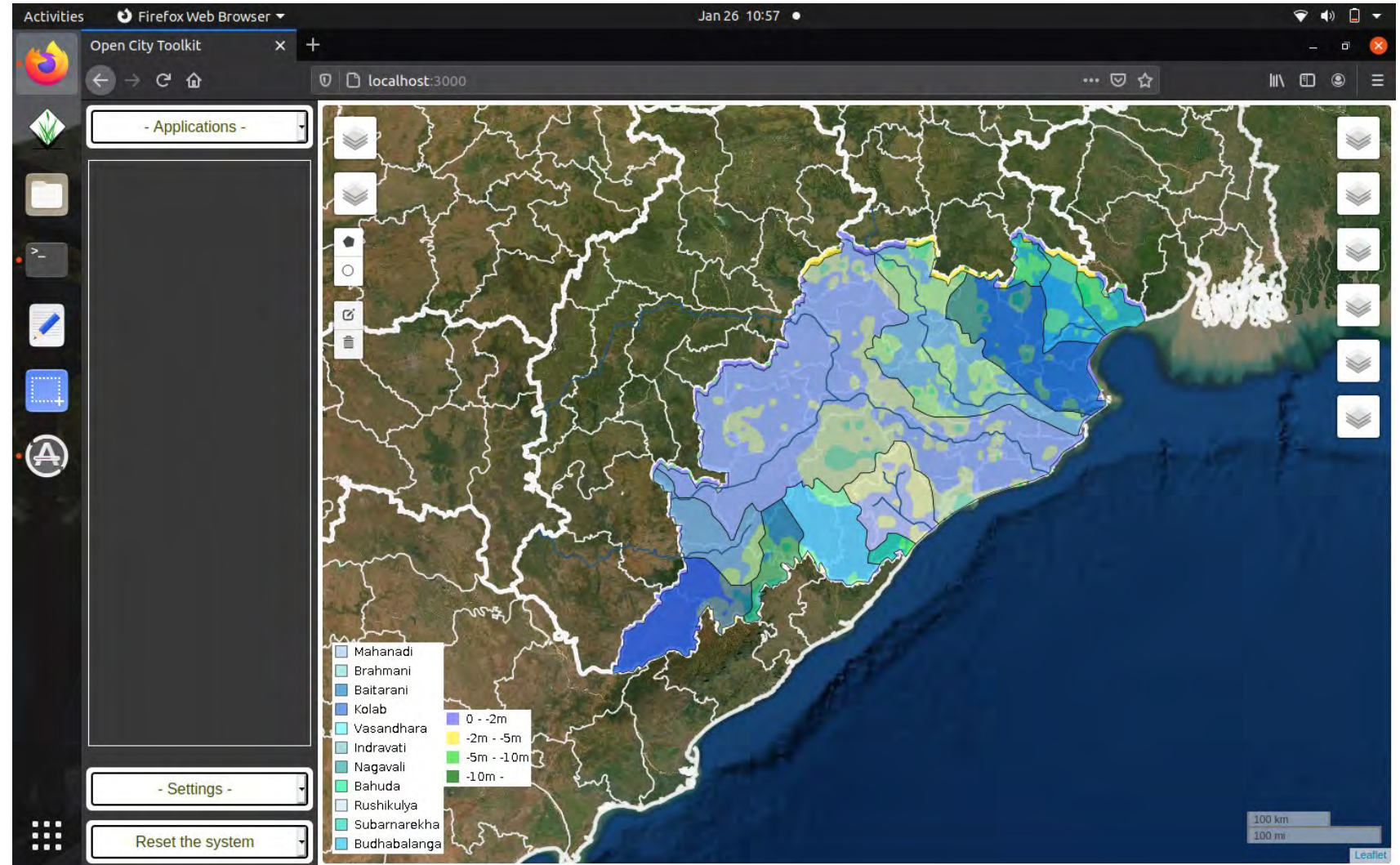


SCIFI City Platform

Rivers &
Basins



SCIFI City Platform



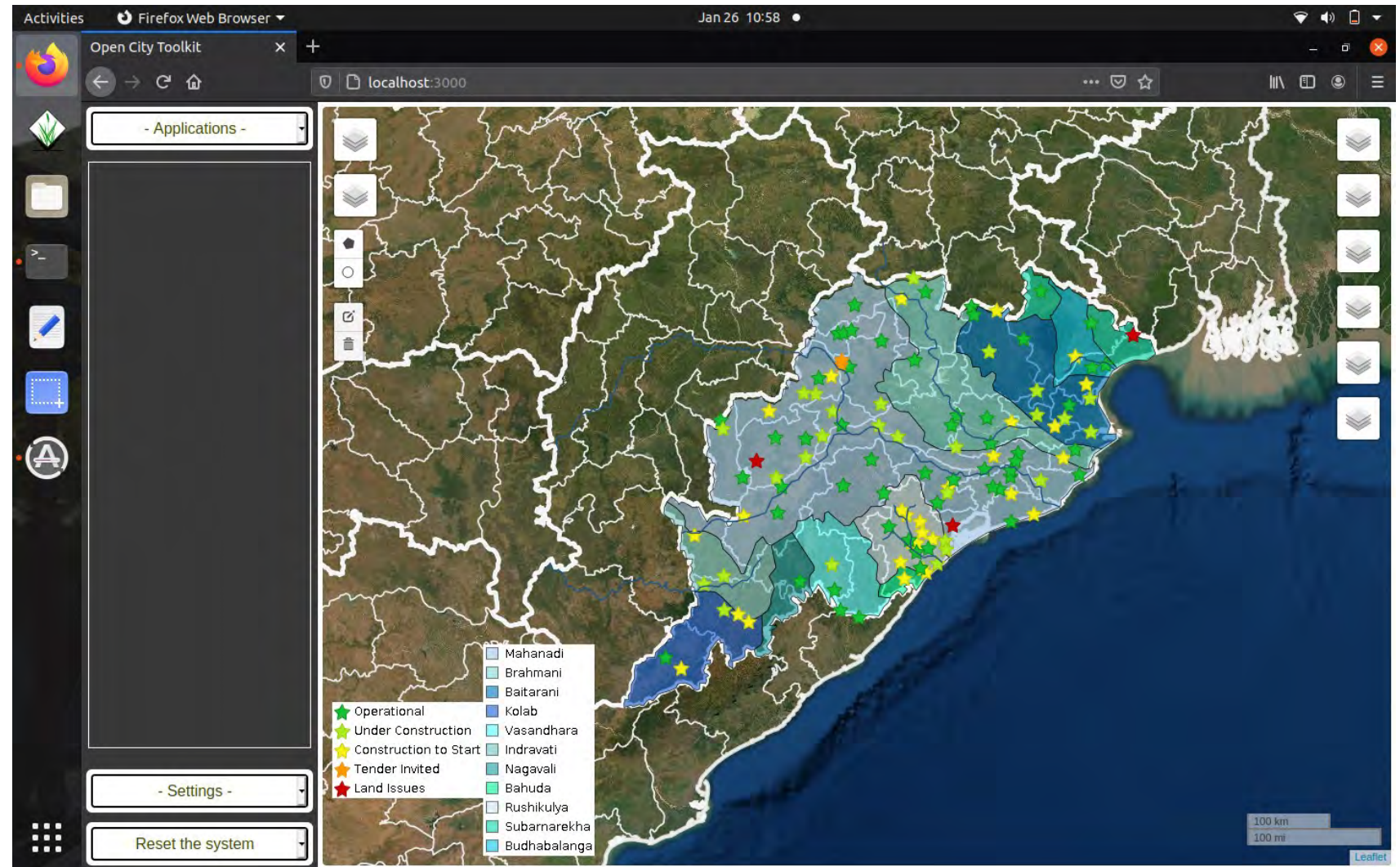
SCIFI City Platform

Infra Status

Admin
Boundaries

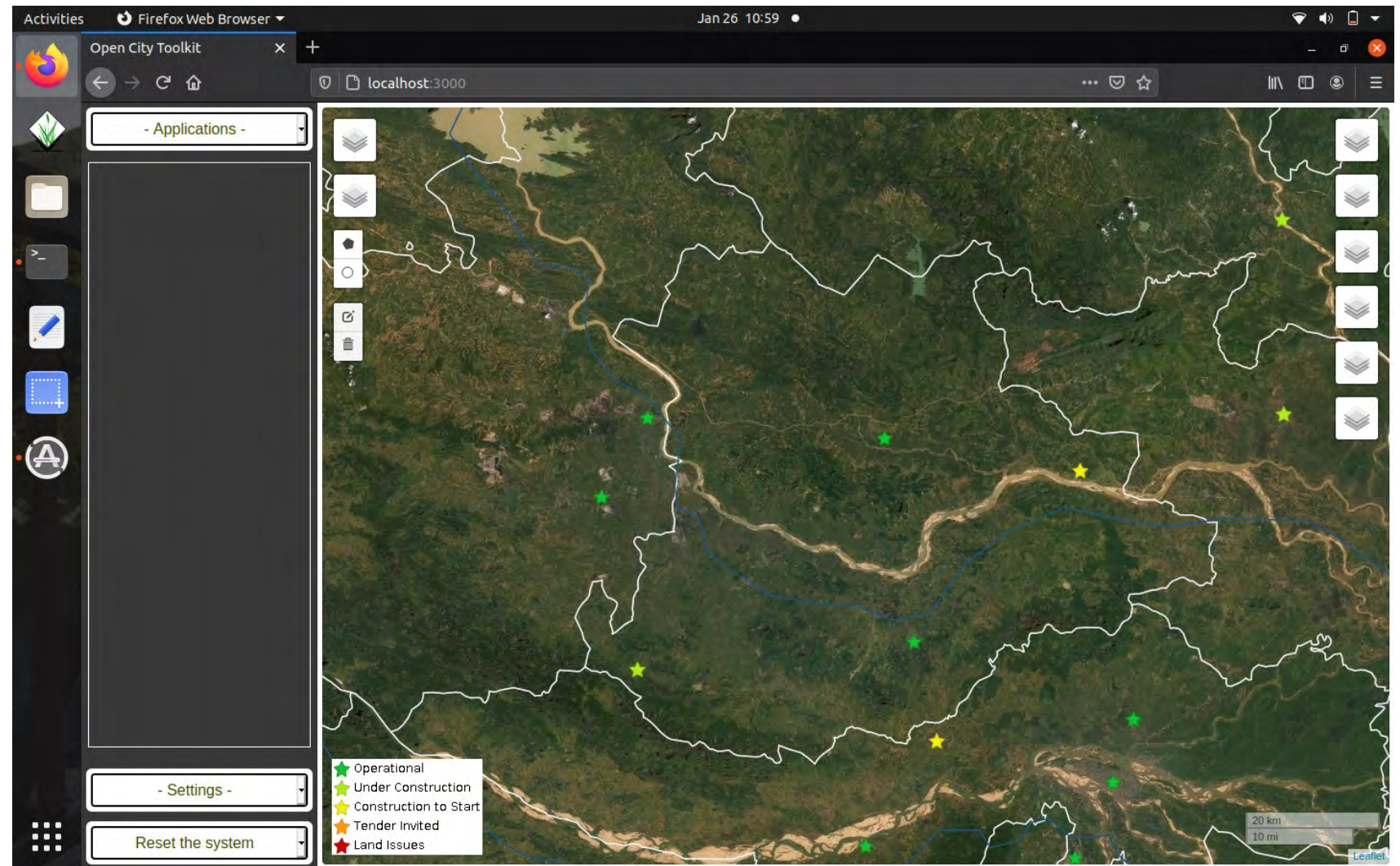
Ground
water

Rivers &
Basins



SCIFI City Platform

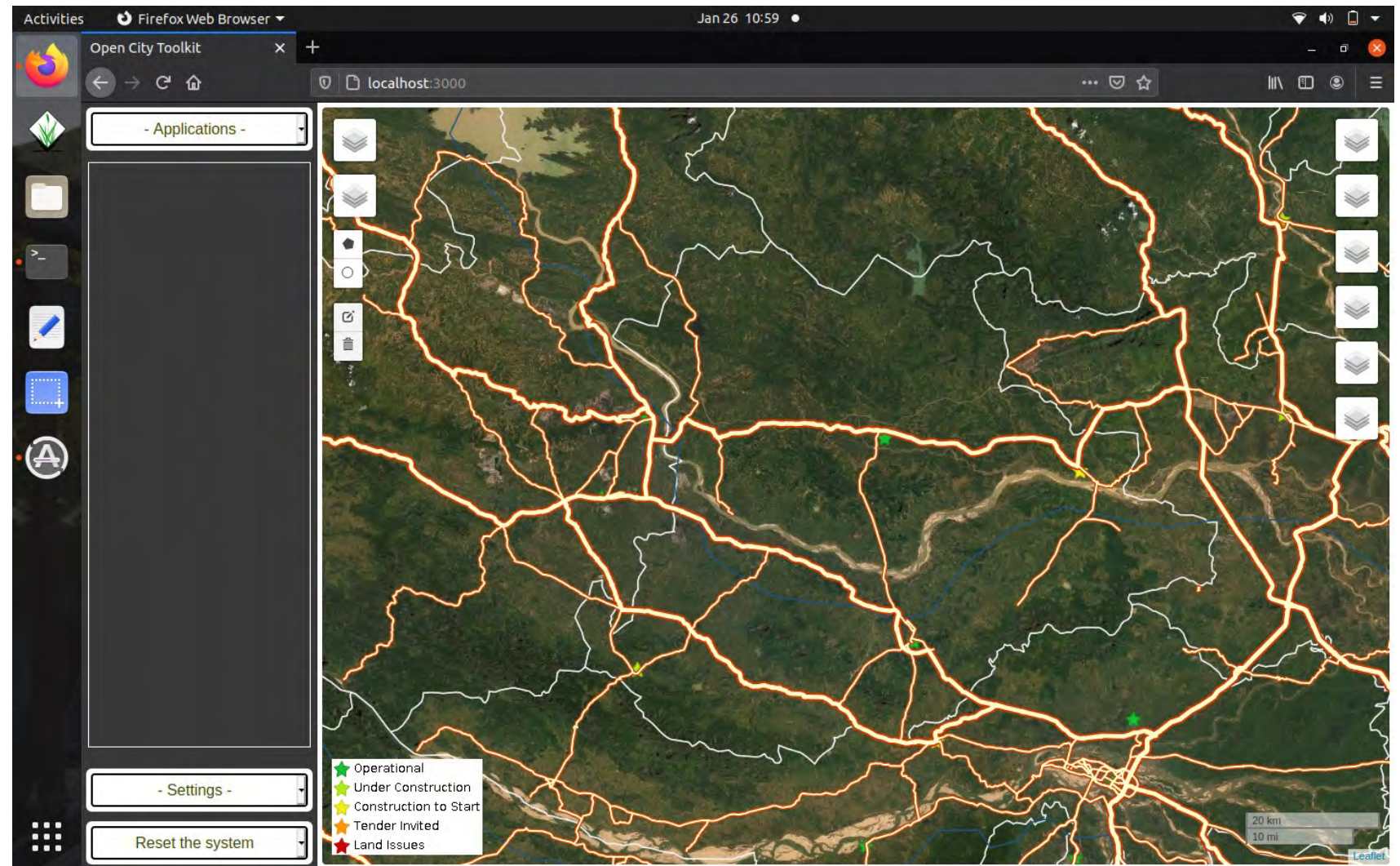
Infra Status



SCIFI City Platform

Road
Network

Infra Status

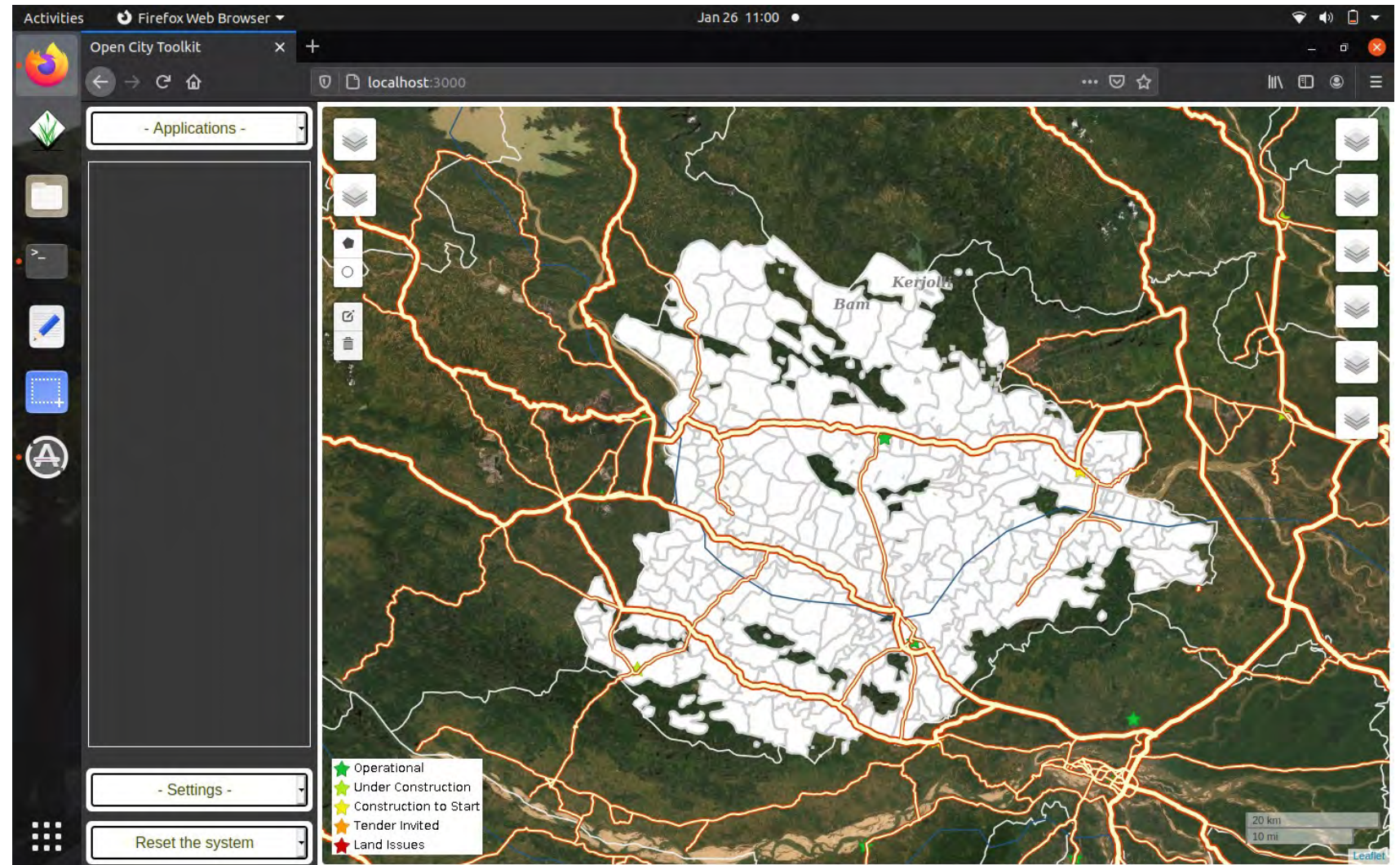


SCIFI City Platform

Local Body
Boundaries

Road
Network

Infra Status



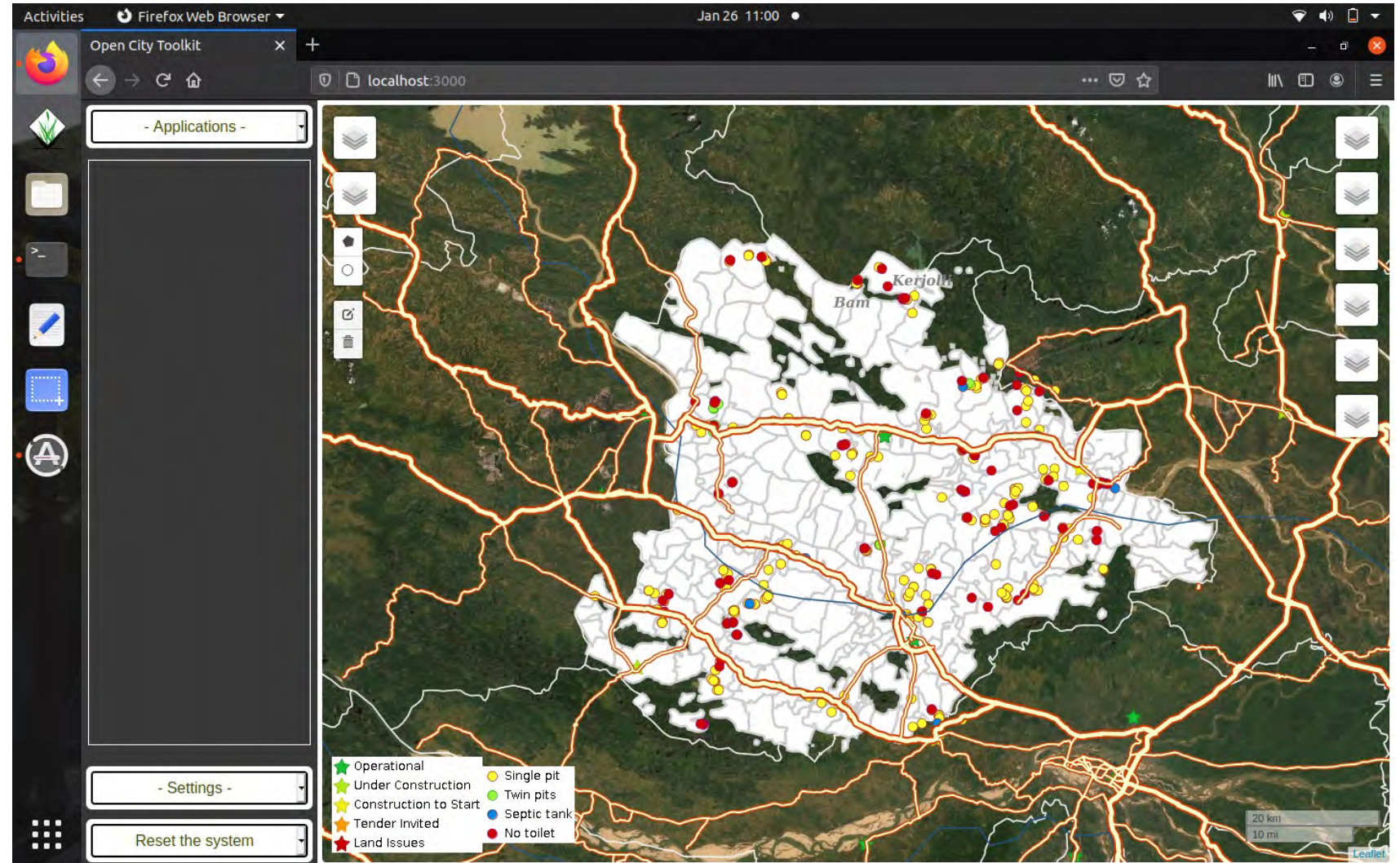
SCIFI City Platform

Demo-
graphic
Data

Local Body
Boundaries

Road
Network

Infra Status



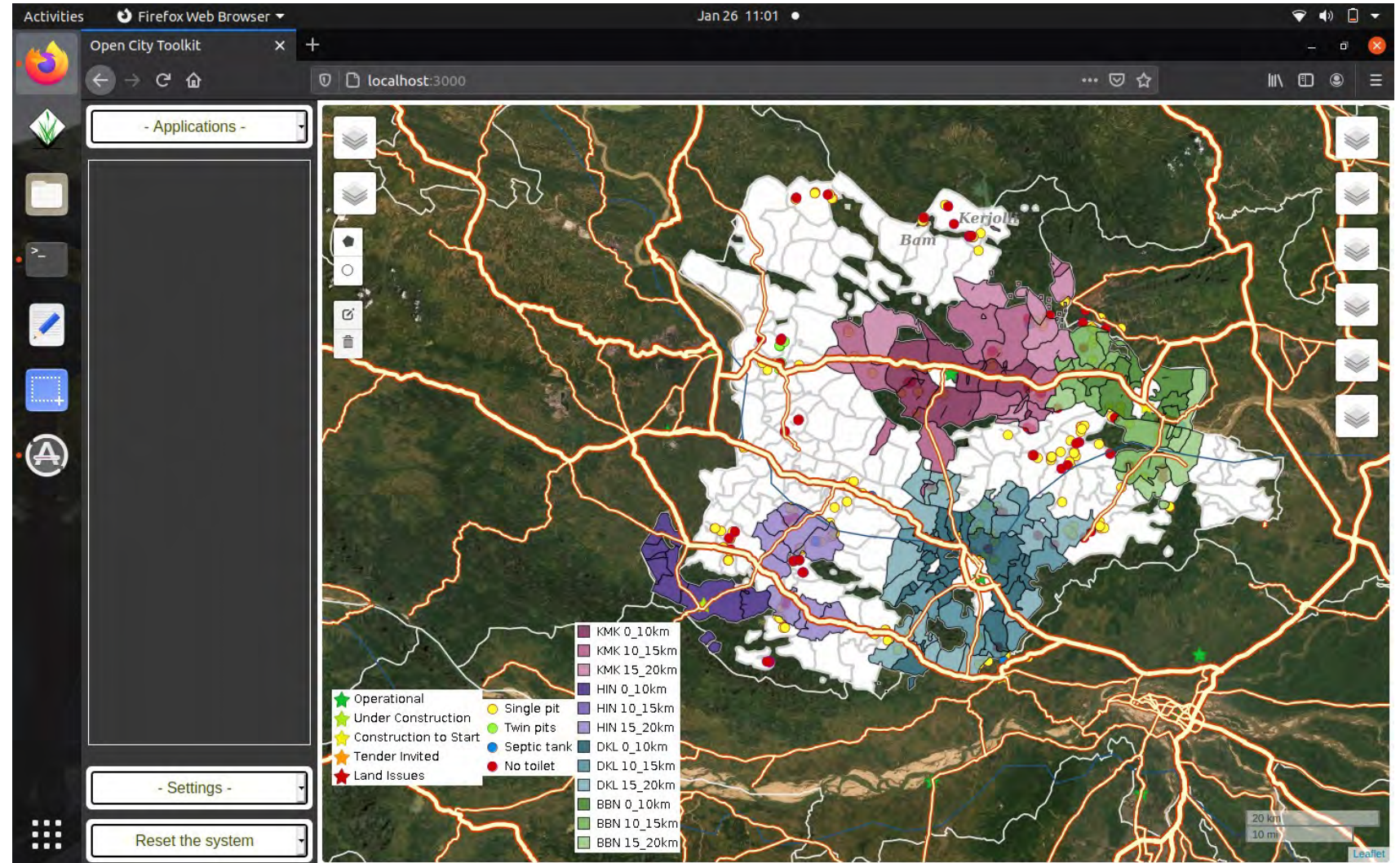
SCIFI City Platform

Demo-
graphic
Data

Local Body
Boundaries

Road
Network

Infra Status



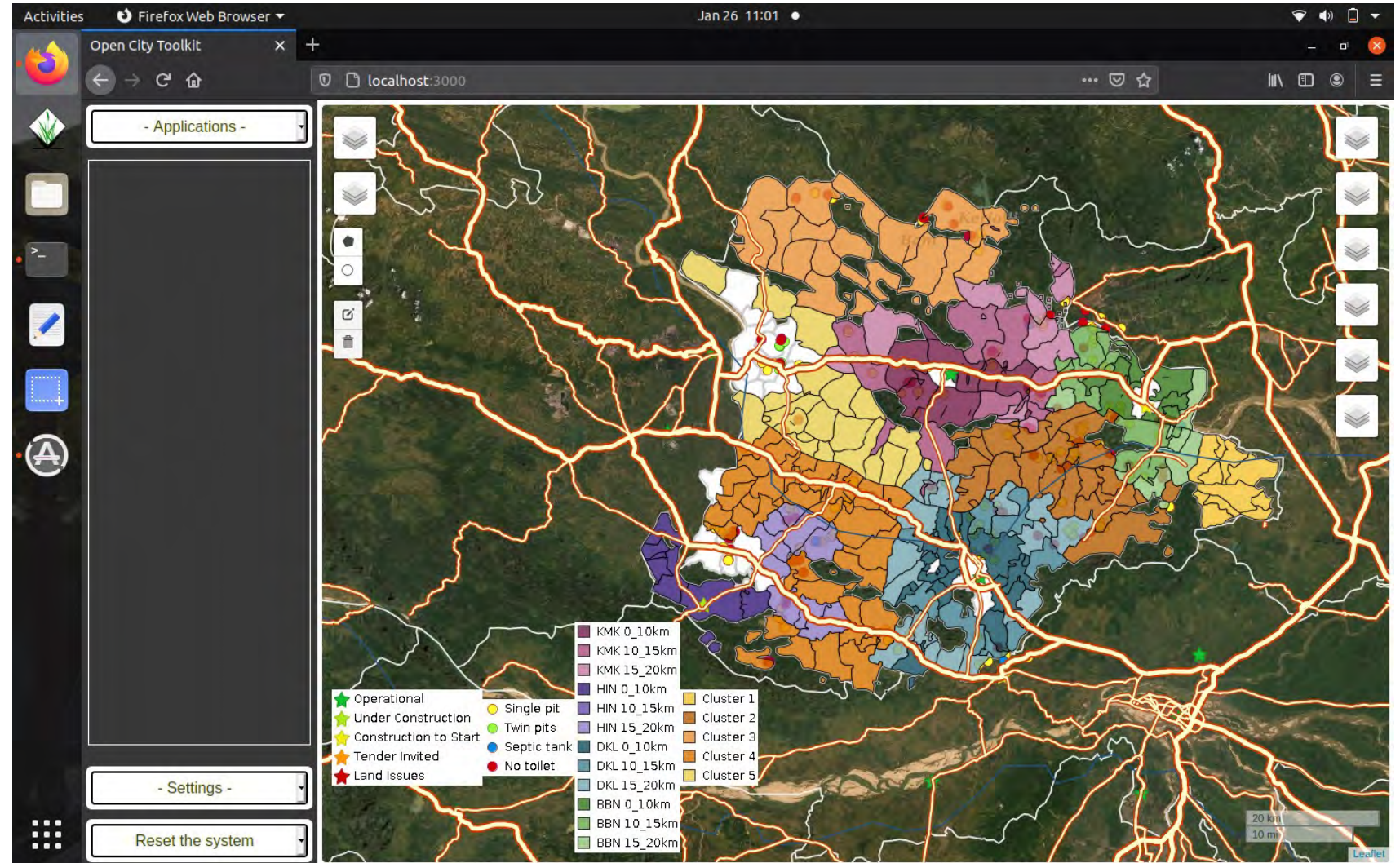
SCIFI City Platform

Demo-
graphic
Data

Local Body
Boundaries

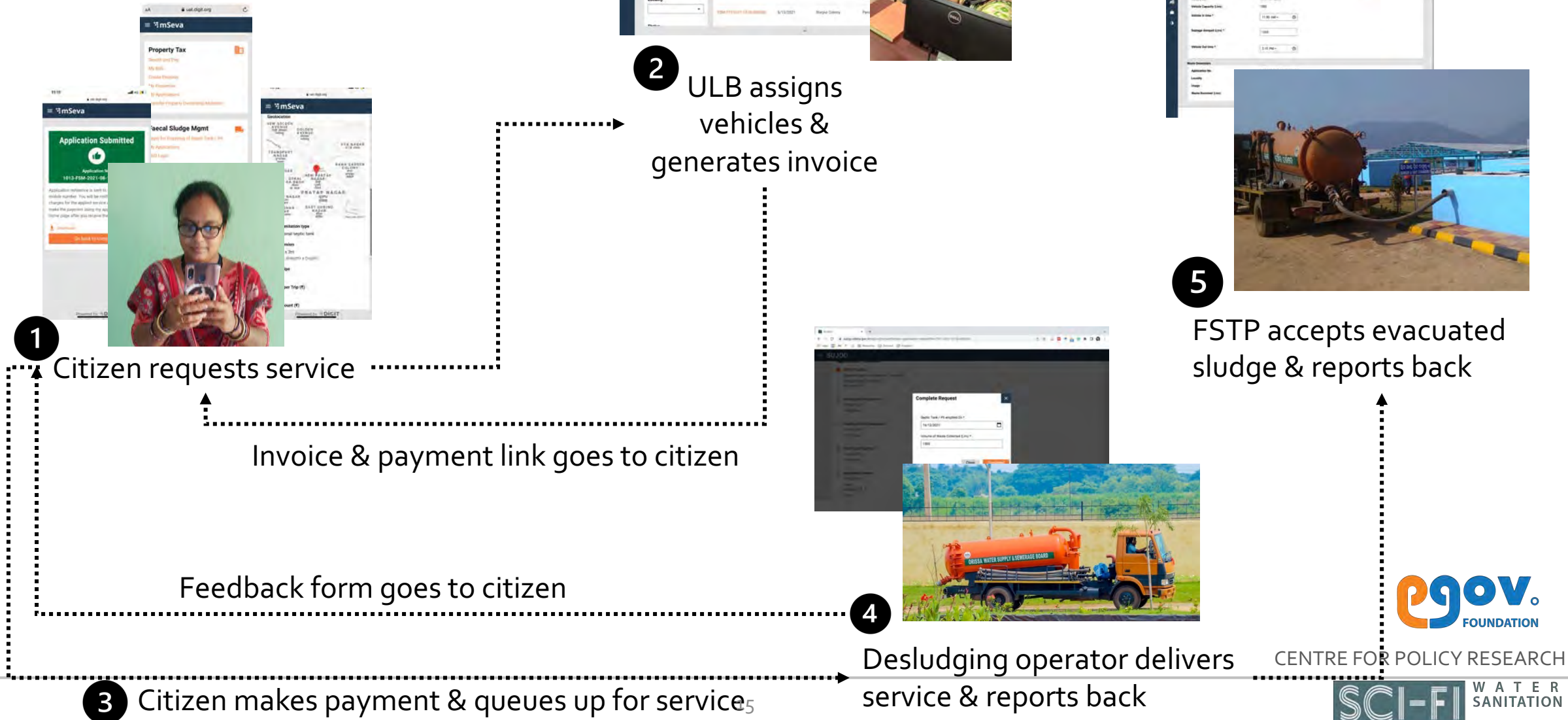
Road
Network

Infra Status

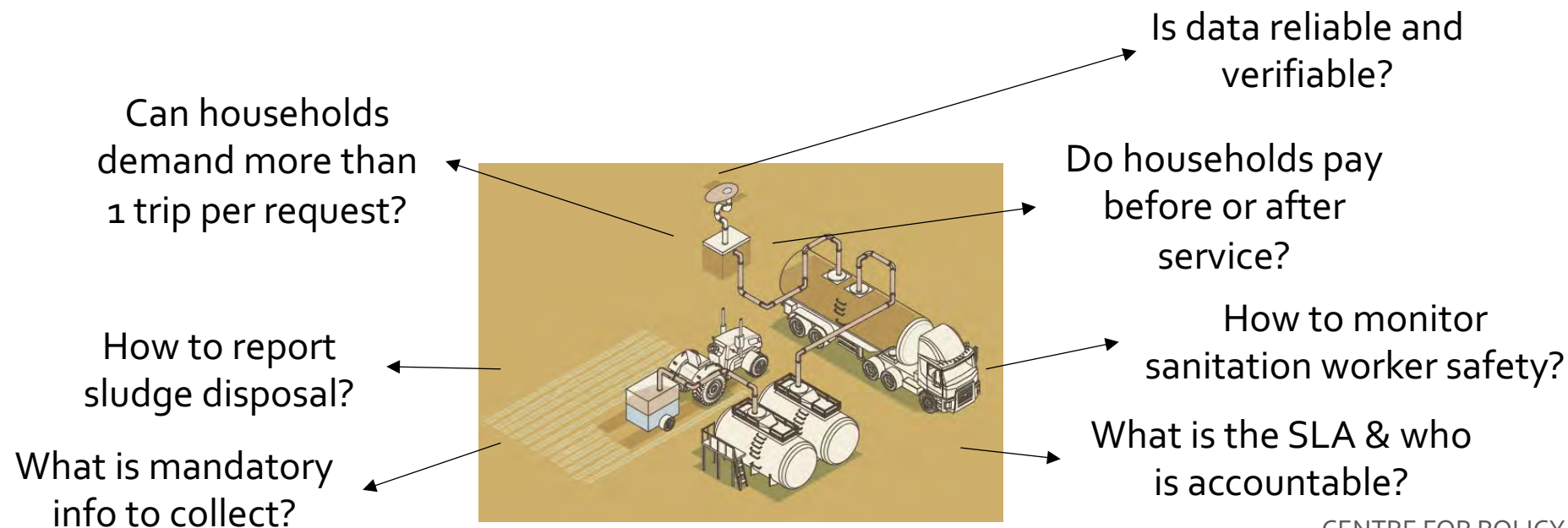
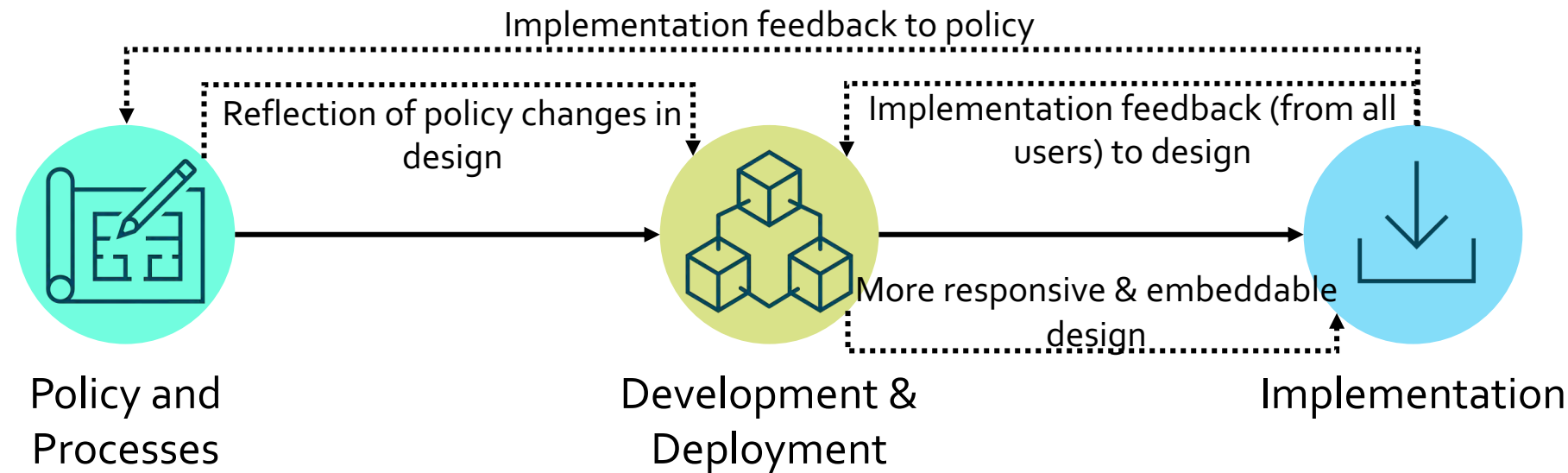


Faecal Sludge Management Platform

Live since December
13, 2022

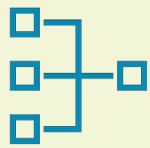


Creating a data system conducive to embeddment



How to strengthen local data ecosystems?

Systems



Integration with
other data systems
& modularity

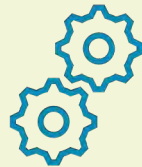


Basic hardware

People



Trainings + Retraining +
Monitoring + Feedback

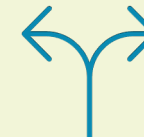


O&M Planning &
Ecosystem Governance

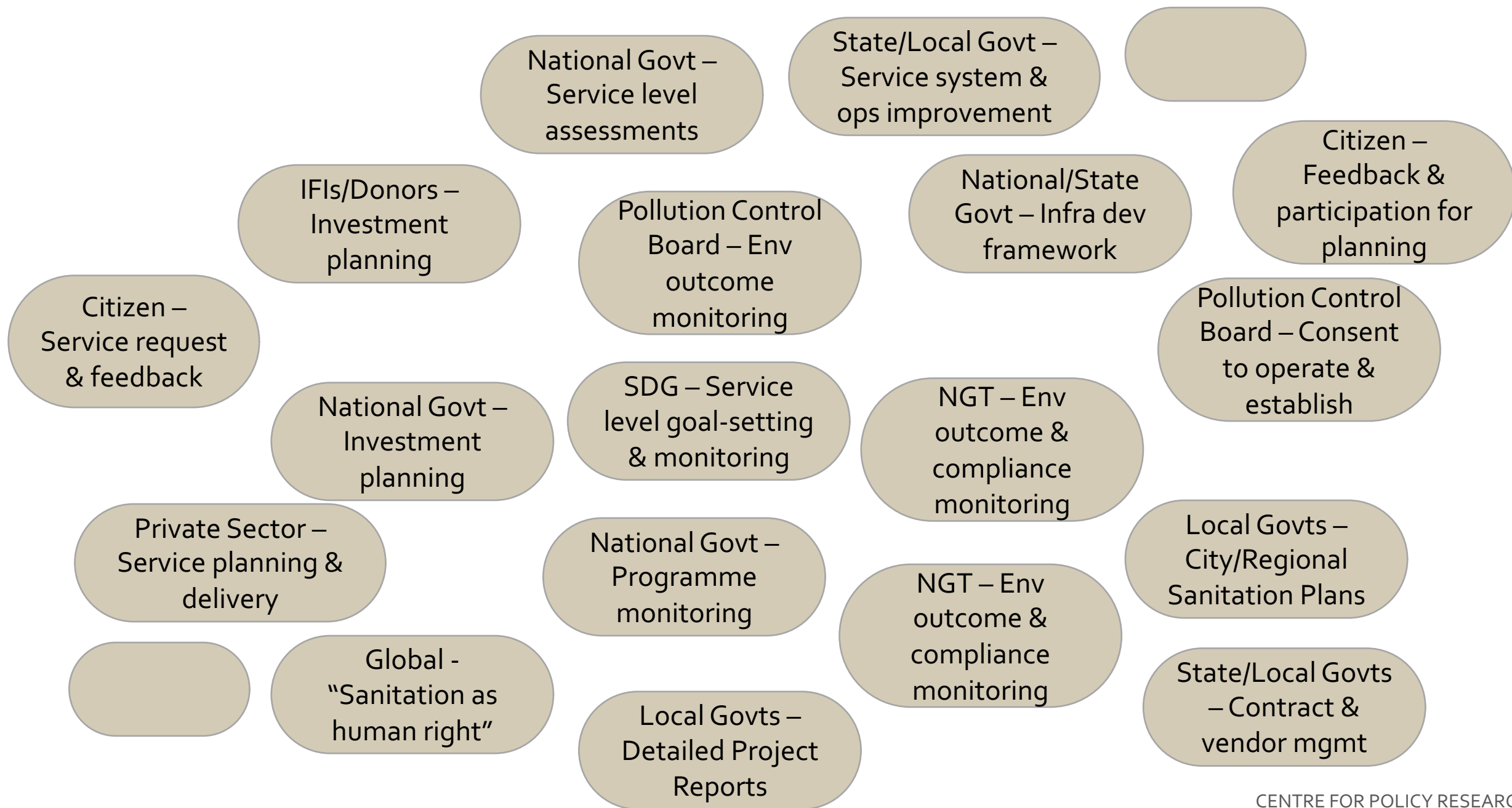
Processes

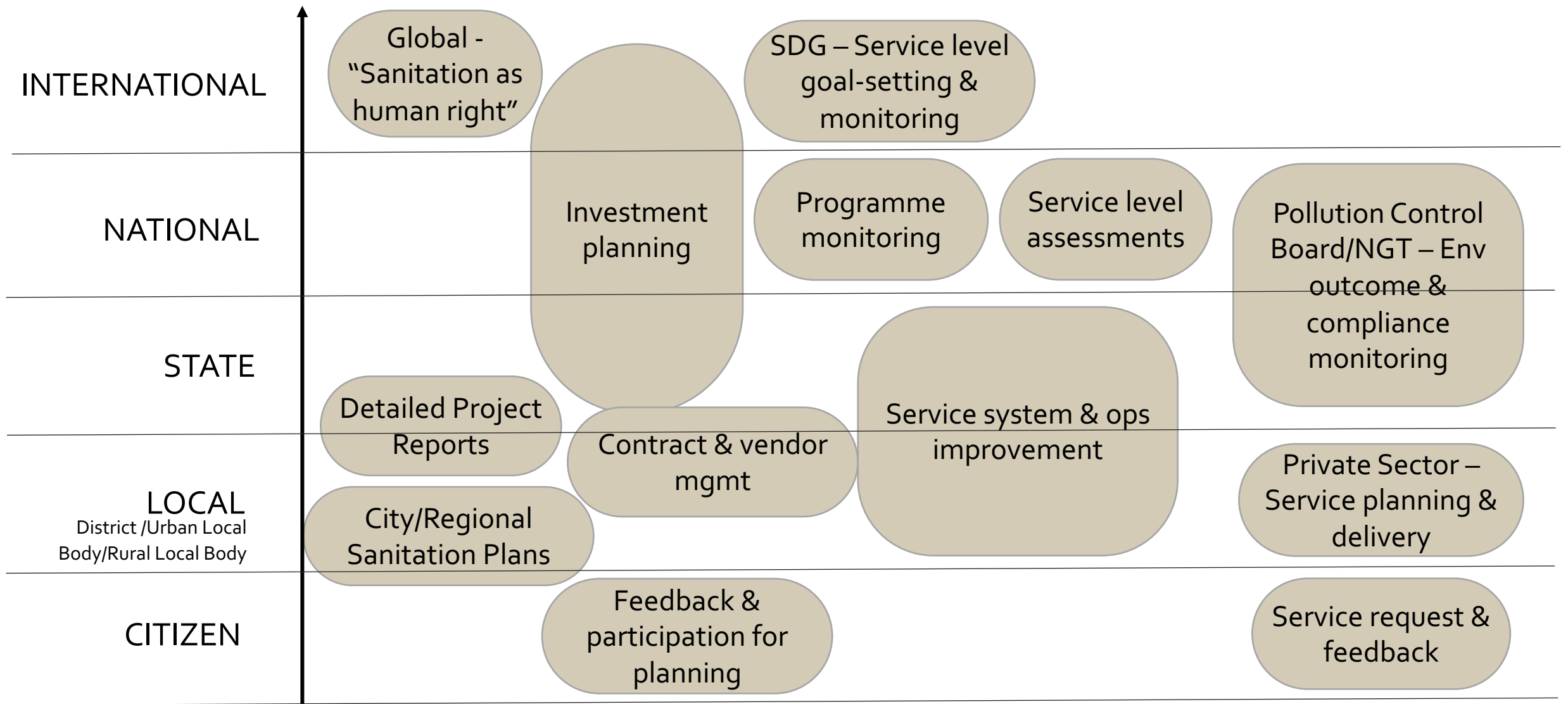


Operational & strategy
insights how-to



Evolving with
sanitation landscape

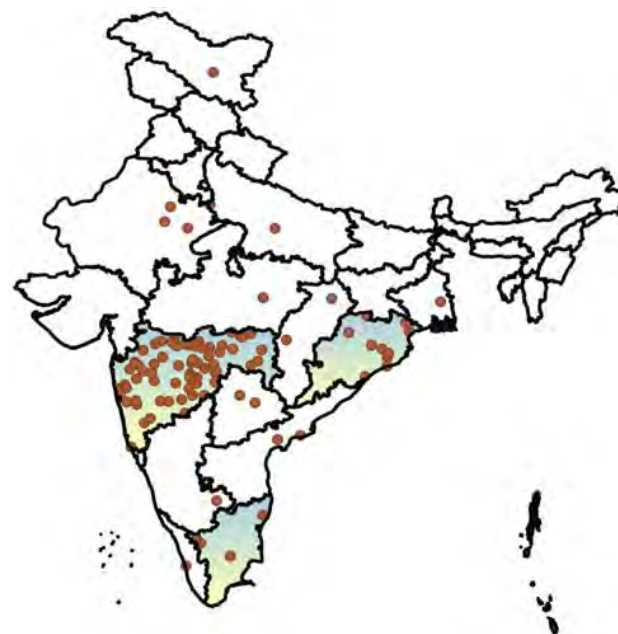




2016 Formal FSM served nearly 0% of 1.3bn



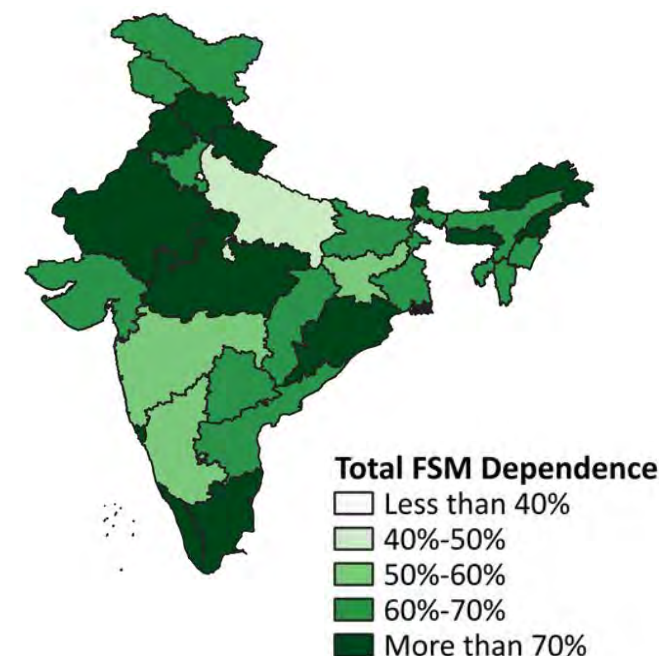
2020 Formal FSM serving about 1% of total population or ~14mn



● Operational/Completed FSTPs^{1,2}

¹as per information available on July 16, 2020 from national PMU

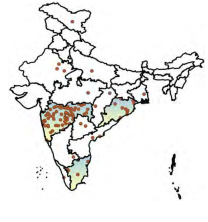
2030 FSM estimated to serve sanitation needs of 64% of total national population or ~960mn



2016 Formal FSM served nearly 0% of 1.3bn

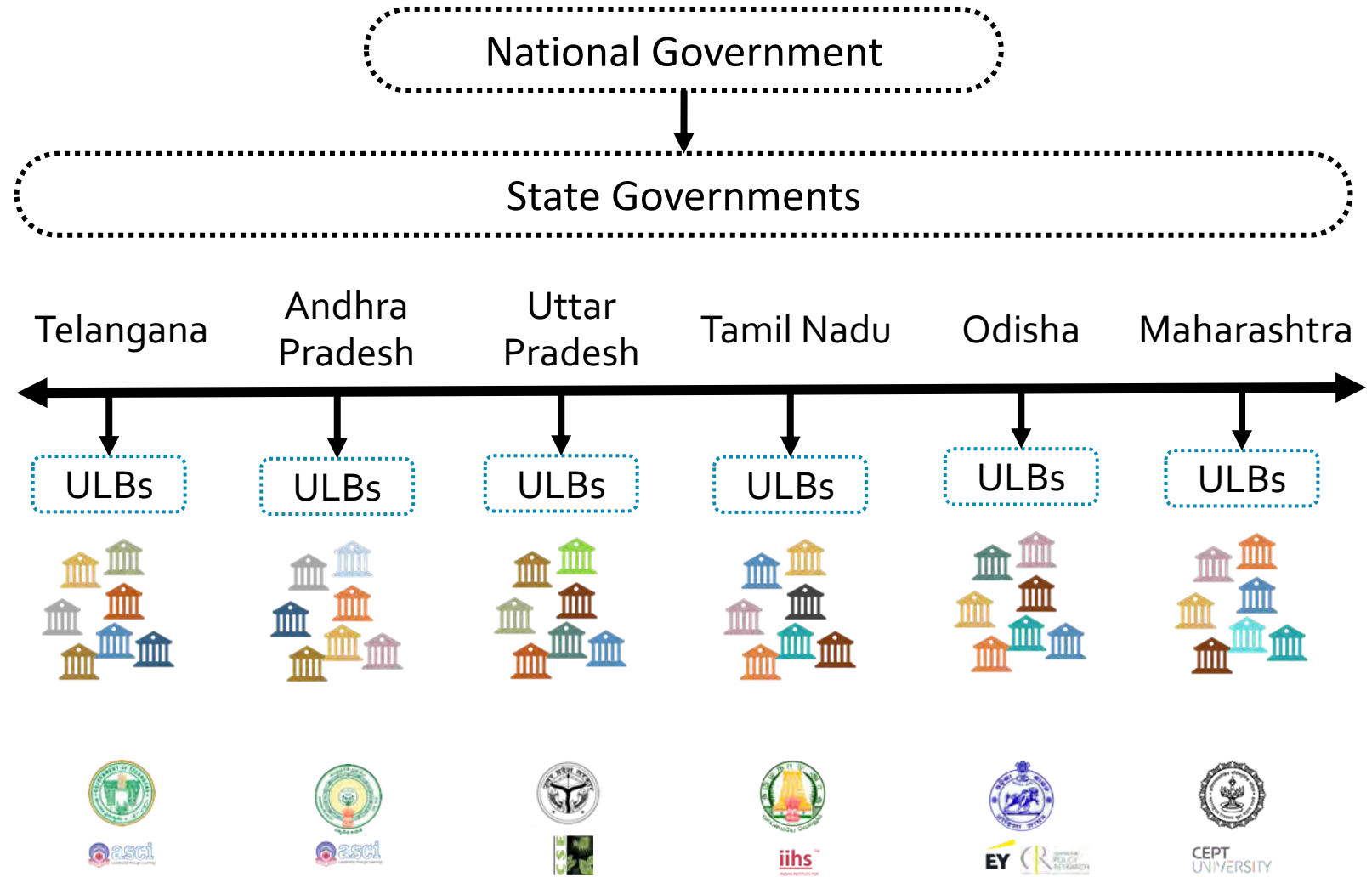
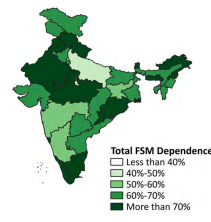


2020 Formal FSM serving about 1% of total population or ~14mn



● Operational/Completed FSTPs^{1,2}
¹as per information available on July15,2020 from national PMU

2030 FSM estimated to serve sanitation needs of 64% of total national population or ~960mn



Diversity of approach

Diversity of resource

Unified goals

Data Systems a tool

Data Ecosystem a project

THANK YOU



www.cprindia.org

The Scaling City Institutions for India (SCI-FI) programme aims to better understand 'governance scale' in Indian cities in tandem with 'sector specific socio-economic scales'. Through research, the programme aims to inform stakeholders, including the three tiers of the government, to develop better informed policies and programmes enabling improved governance and service delivery. It has two key thematic focus in areas of Land, Housing and Planning, and Water and Sanitation. The SCI-FI programme is nested at the Centre for Policy Research (CPR) since 2013.
